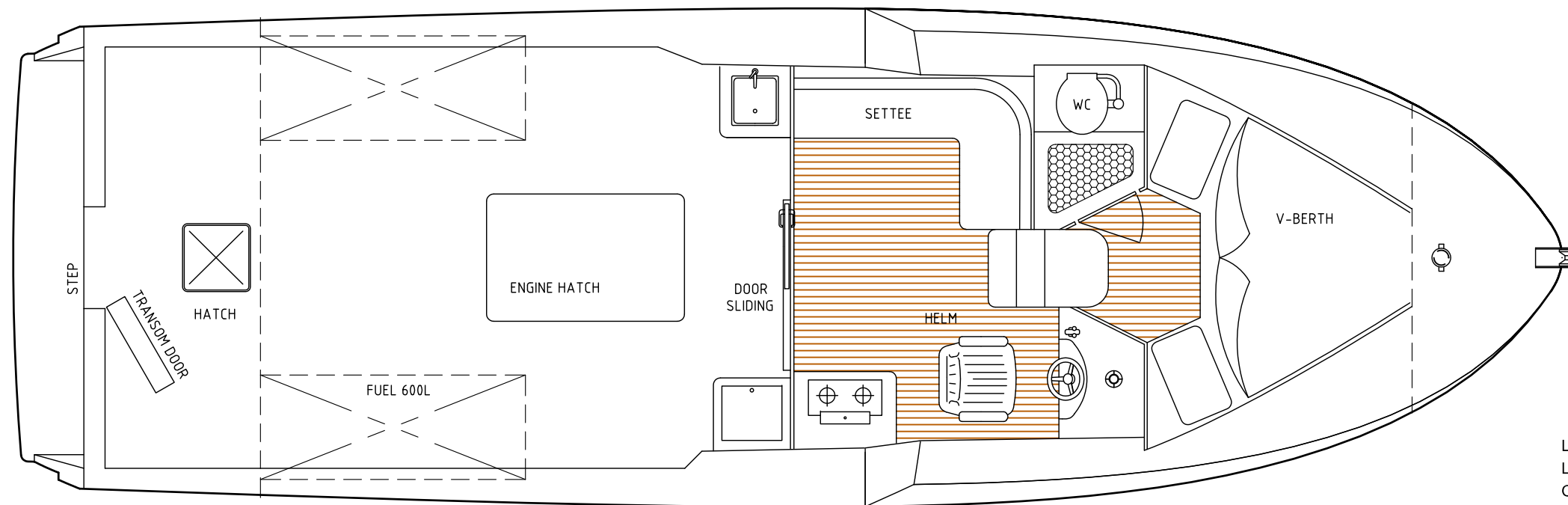
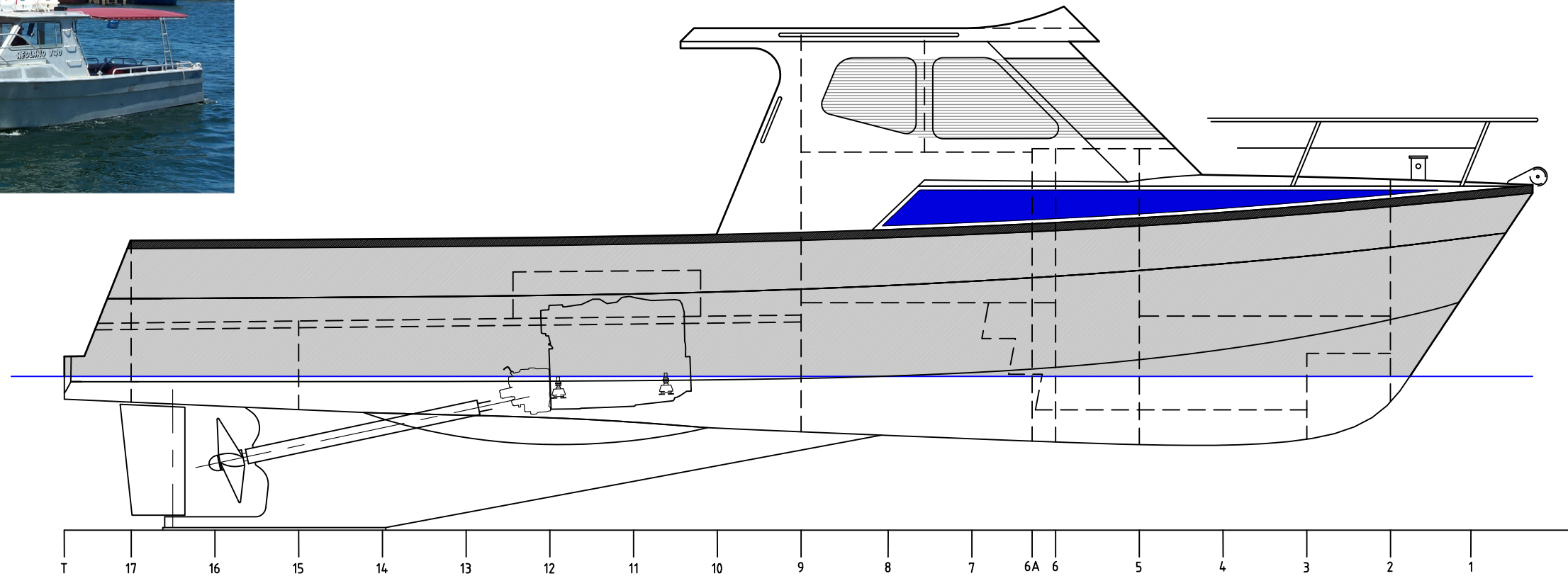


This drawing is the sole property of AB Marine, ABN 42 416 594 672. It may not be copied, reproduced, or modified, in whole or in part without prior written permission.



11m WORKBOAT



DESIGN PARTICULARS:

LOA:	11.0 m
LWL:	10.0 m
Overall Beam:	3.6 m
Displacement:	5200 kg
Draft:	1.15 m
Fuel Capacity:	1200 L
Engine:	326 Hp
Speed (Max./Cruise)	23 / 17 Knots
Propeller:	650 mm