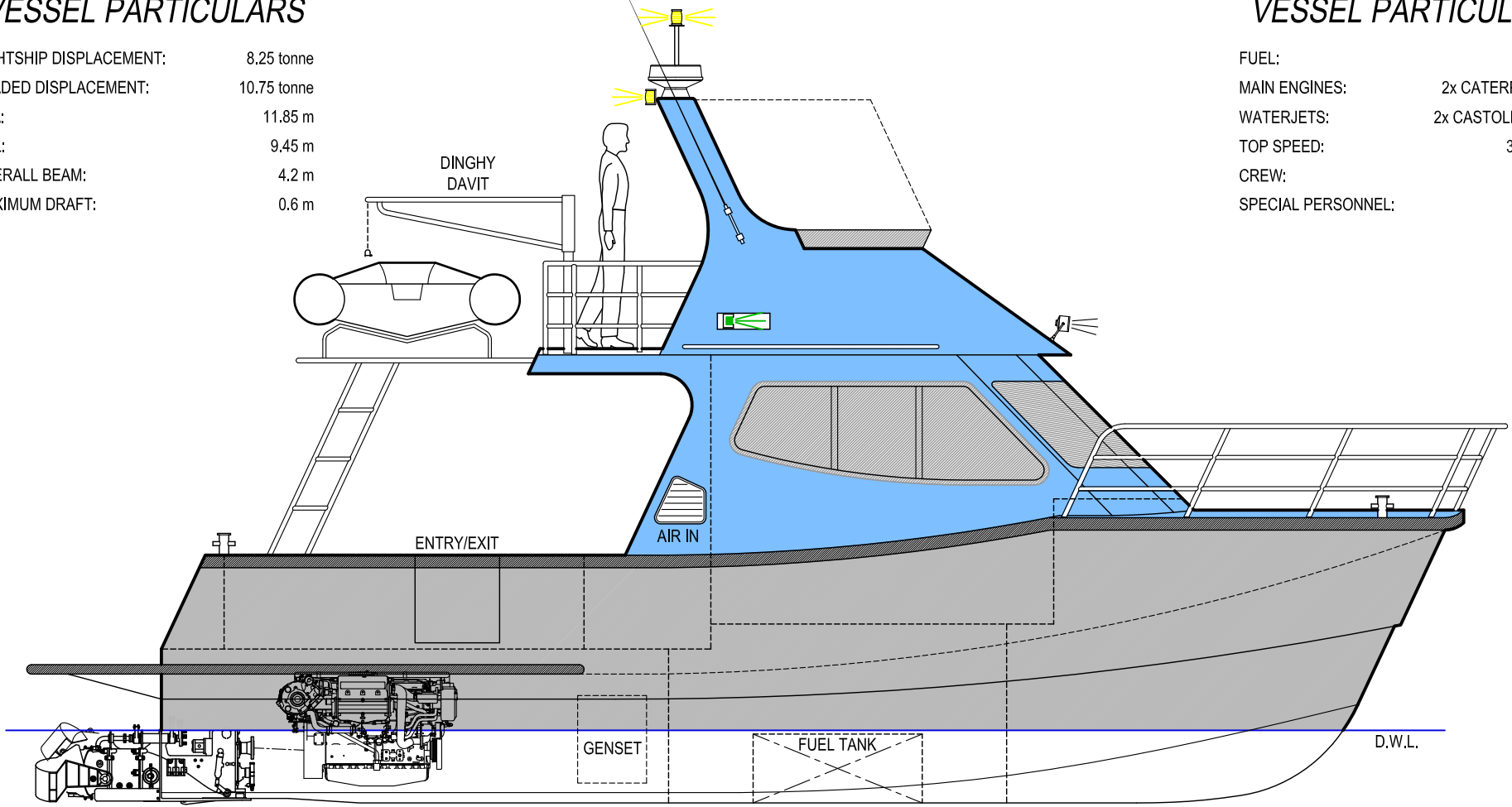


### VESSEL PARTICULARS

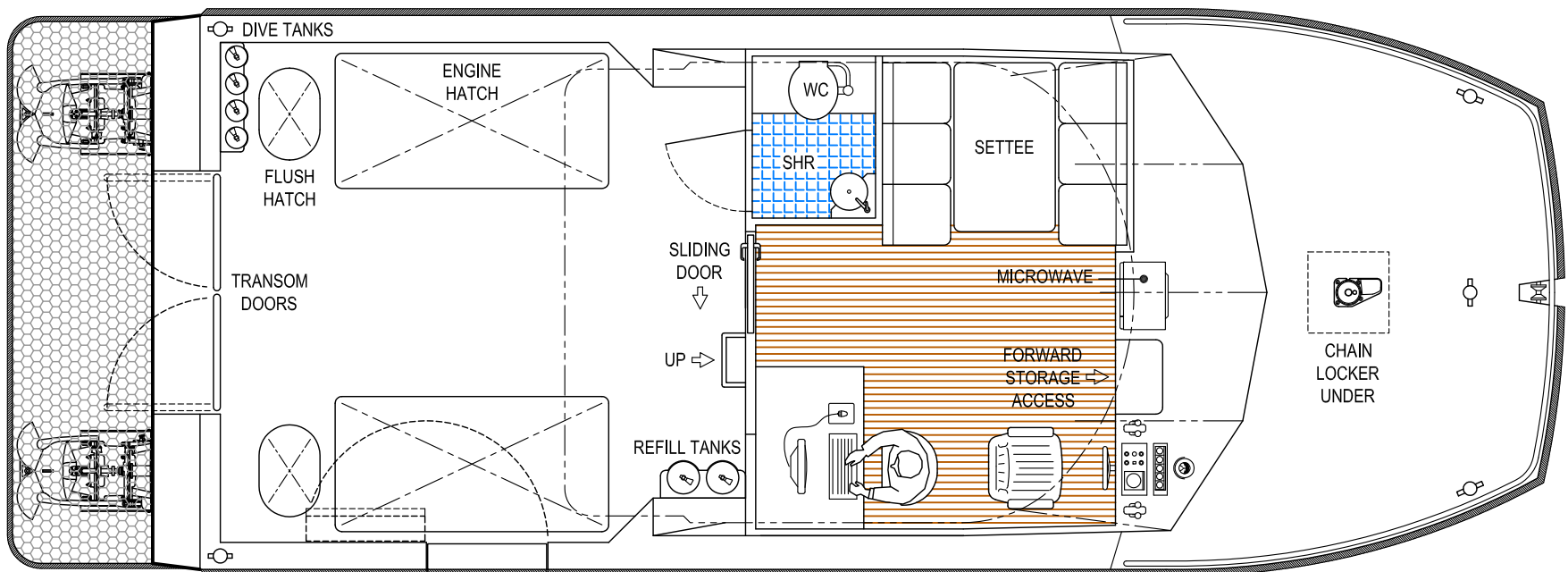
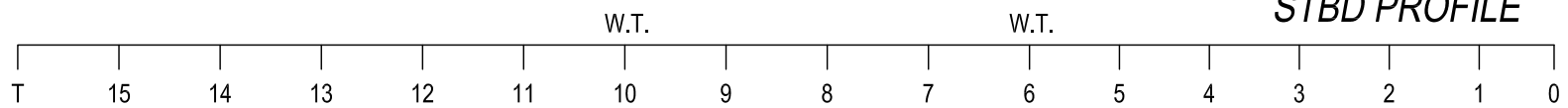
LIGHTSHIP DISPLACEMENT: 8.25 tonne  
 LOADED DISPLACEMENT: 10.75 tonne  
 LOA: 11.85 m  
 LWL: 9.45 m  
 OVERALL BEAM: 4.2 m  
 MAXIMUM DRAFT: 0.6 m

### VESSEL PARTICULARS

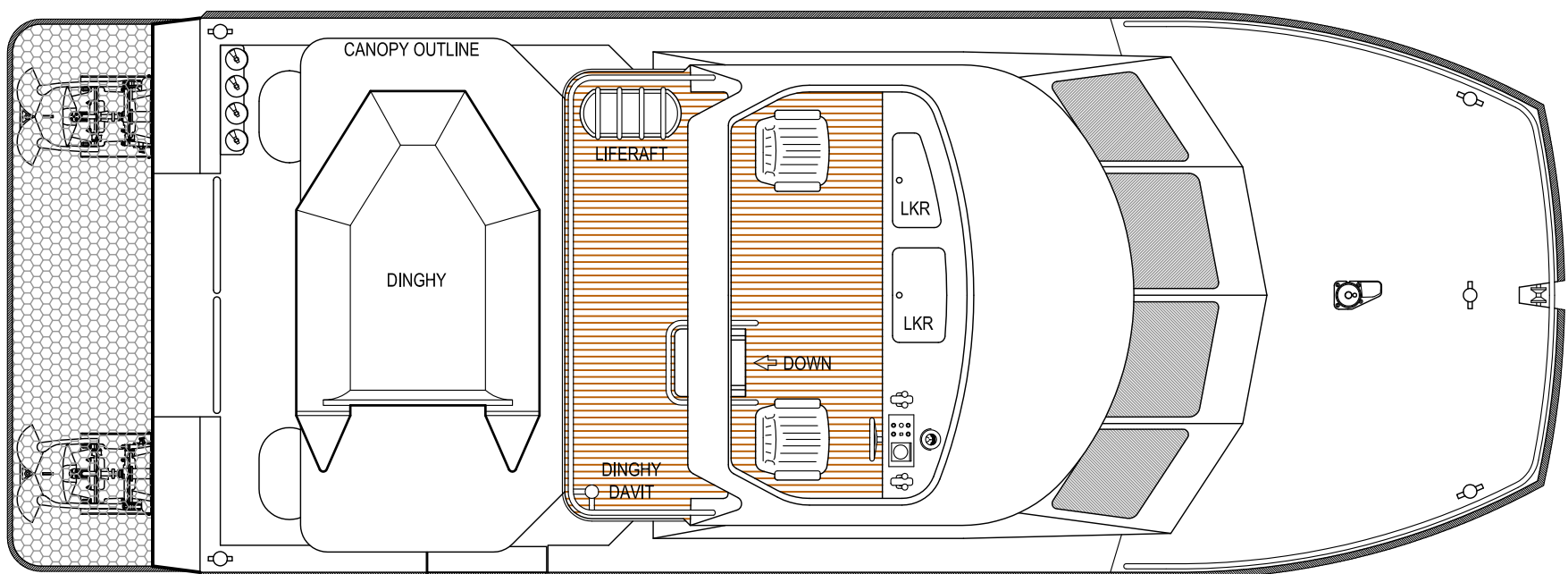
FUEL: 1800 L  
 MAIN ENGINES: 2x CATERPILLAR C7  
 WATERJETS: 2x CASTOLDI 340H.C.  
 TOP SPEED: 30-33 knots  
 CREW: 2  
 SPECIAL PERSONNEL: 6



STBD PROFILE



MAIN DECK PLAN



FLYBRIDGE DECK PLAN

