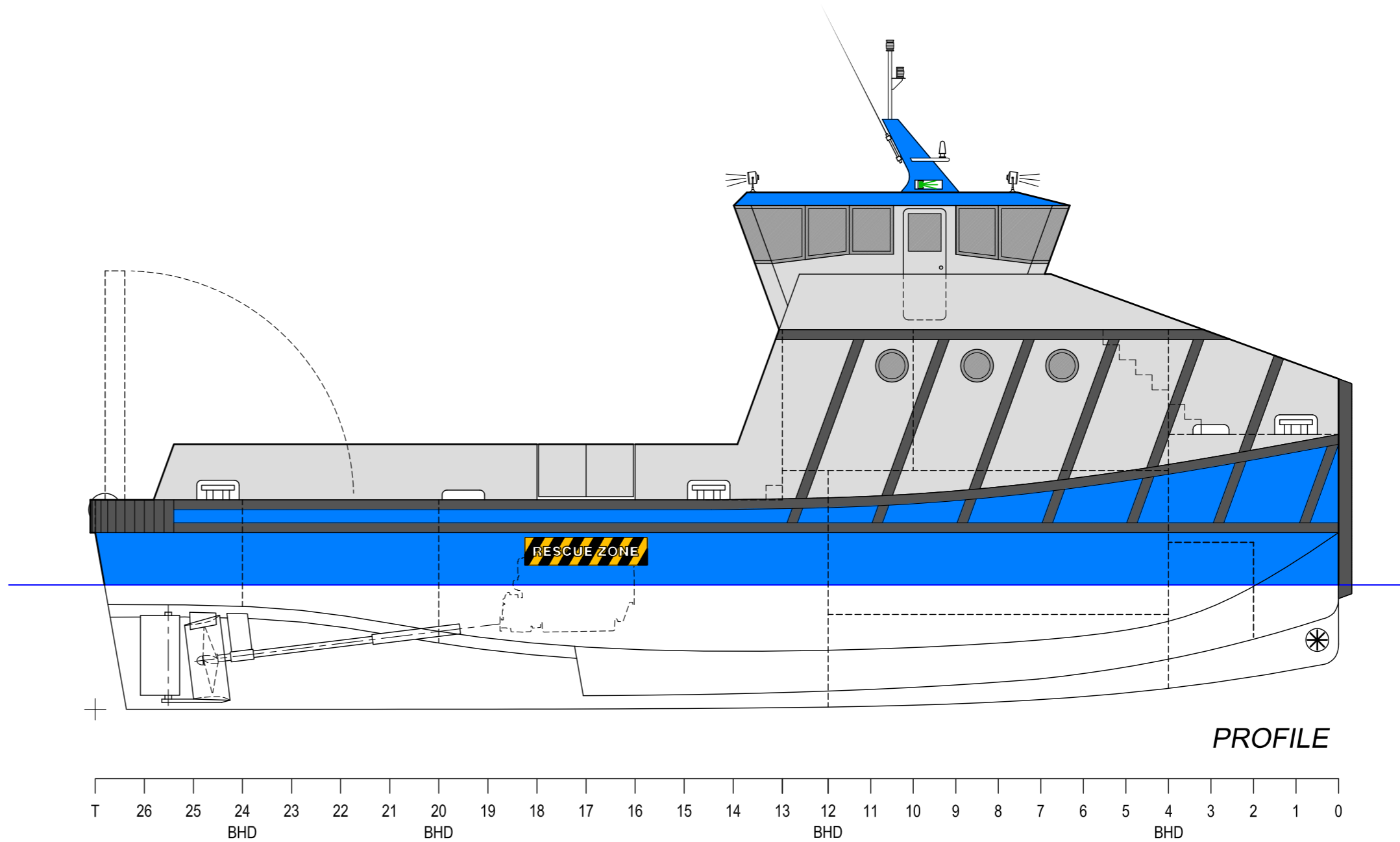
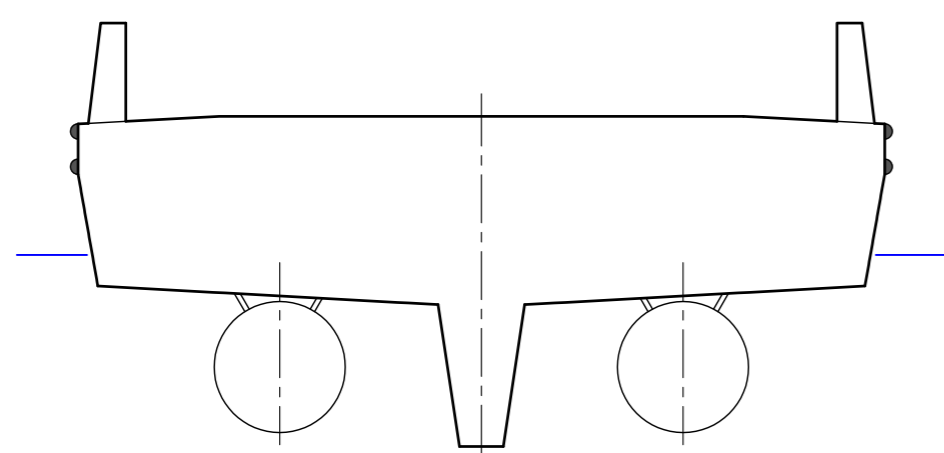


MIDSHIP SECTION

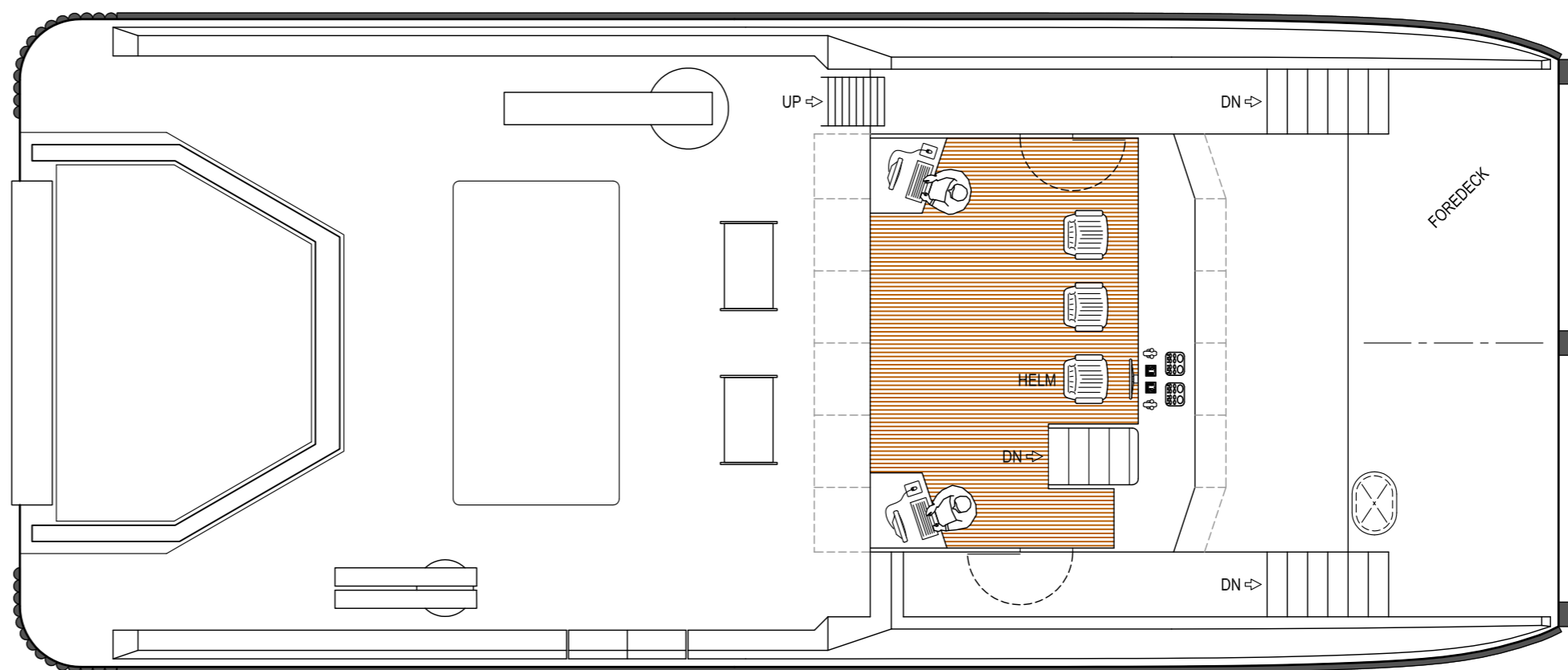


PROFILE

T 26 25 24 23 22 21 20 19 18 17 16 15 14 13 12 11 10 9 8 7 6 5 4 3 2 1 0
BHD BHD BHD BHD

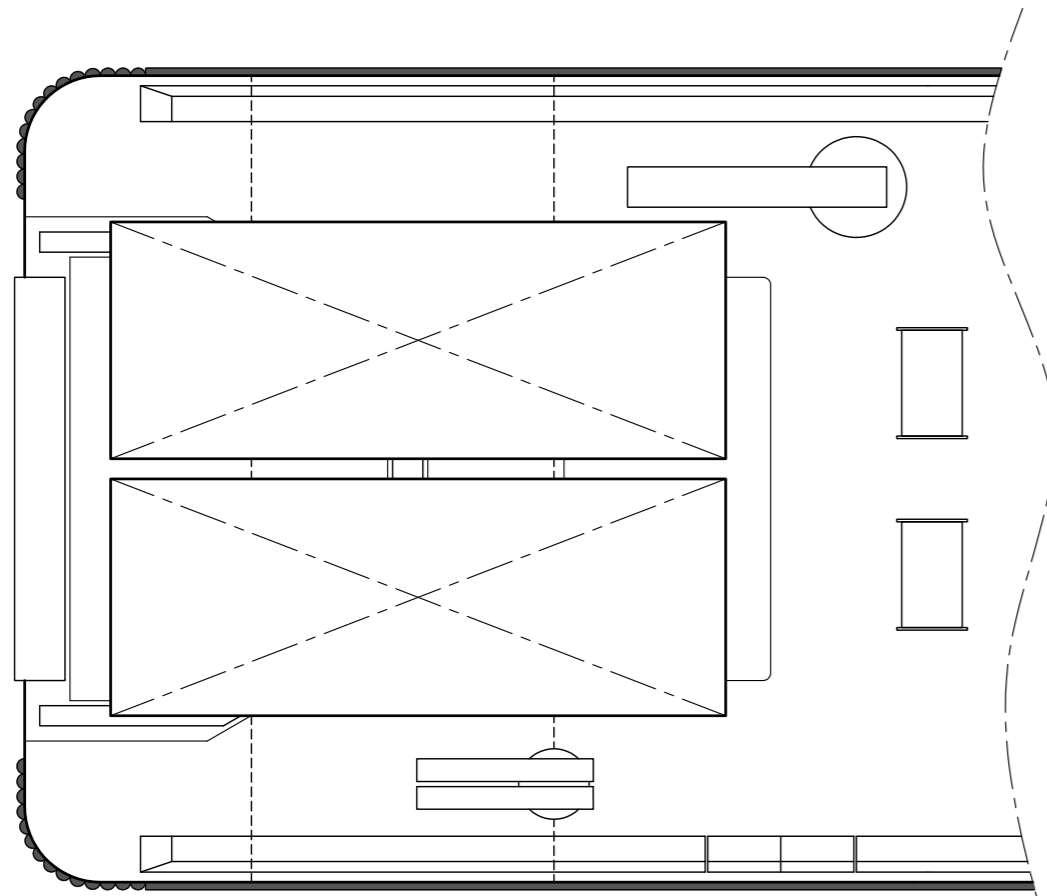


PROPELLERS SECTION

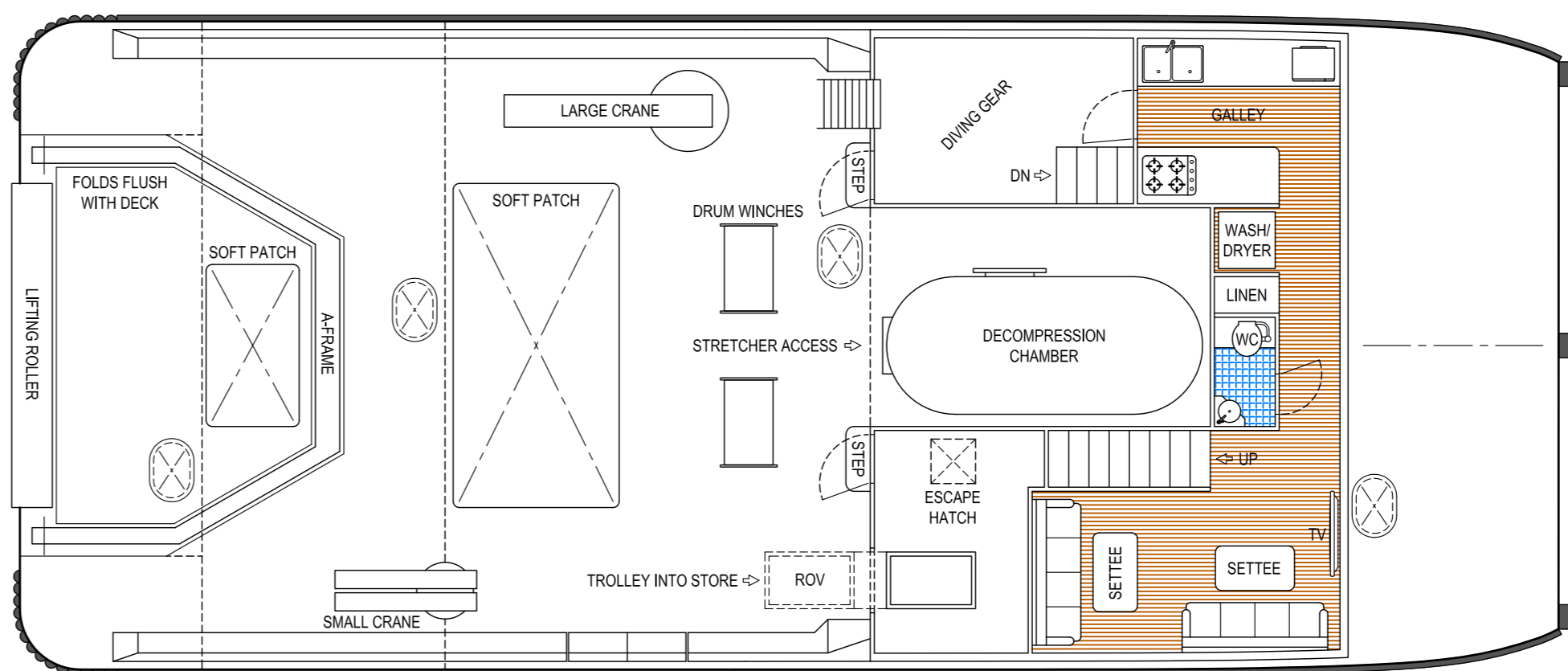


WHEELHOUSE DECK

2x20' CONTAINERS ON AFT DECK



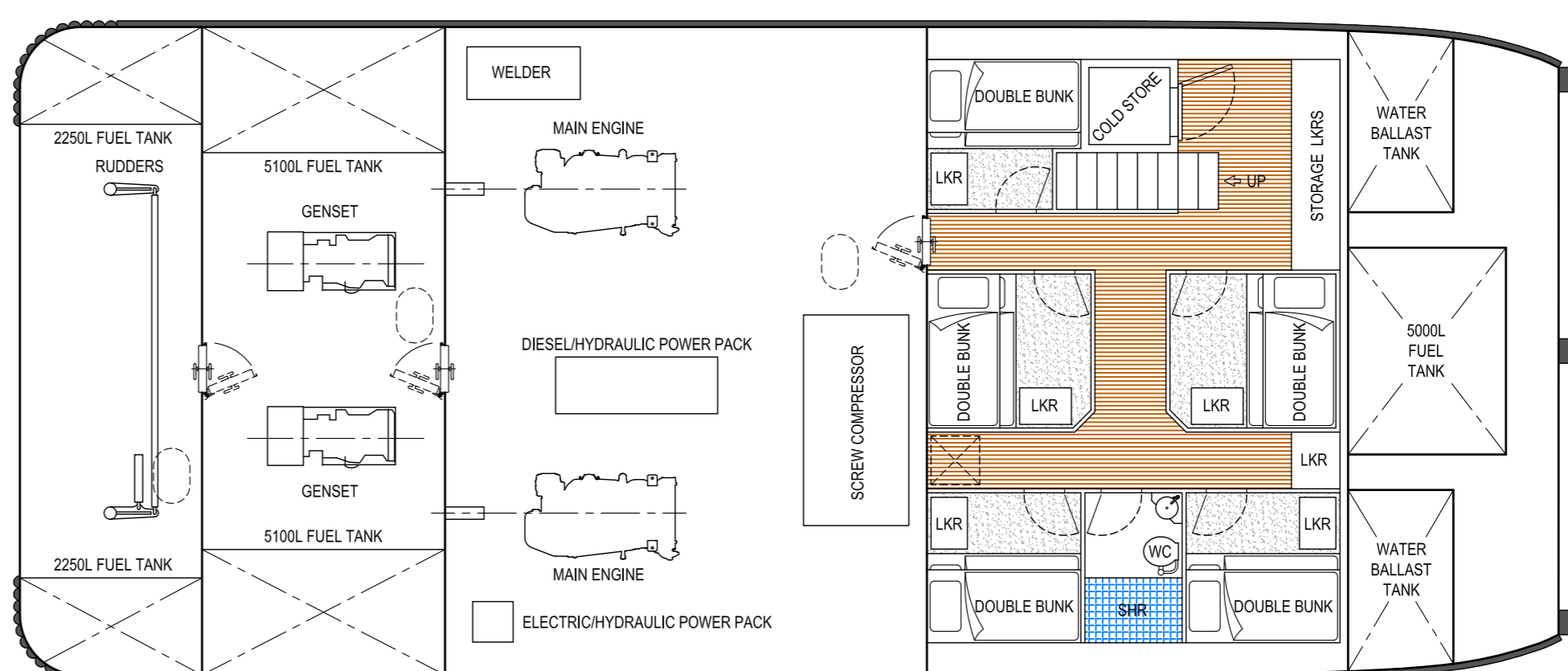
T 26 25 24 23 22 21 20 19 18 17 16 15 14
BHD BHD



MAIN DECK

PRELIMINARY PARTICULARS

LENGTH OVERALL:	19.3m
HULL LENGTH:	19.0m
WATERLINE LENGTH:	18.9m
HULL BEAM:	8.0m + FENDER
MAXIMUM DRAFT:	2.0m
LIGHTSHIP DISPLACEMENT:	80tonne
LOADED DISPLACEMENT:	120tonne
FUEL:	19700L
FRESH WATER:	2x1000L + WATER MAKER
SULLAGE:	1000L + TREATMENT SYSTEM
MAIN ENGINES:	CATERPILLAR C18
ENGINE POWER:	2x 487hp @ 1800rpm
PROPELLER NOZZLES:	T.B.A.
RANGE (WITH 10% RESERVE):	T.B.A.
GENSETS:	2x CATERPILLAR G4.4
LARGE DECK CRANE:	T.B.A.
SMALL DECK CRANE:	T.B.A.
PERSONNEL:	10



LOWER DECK