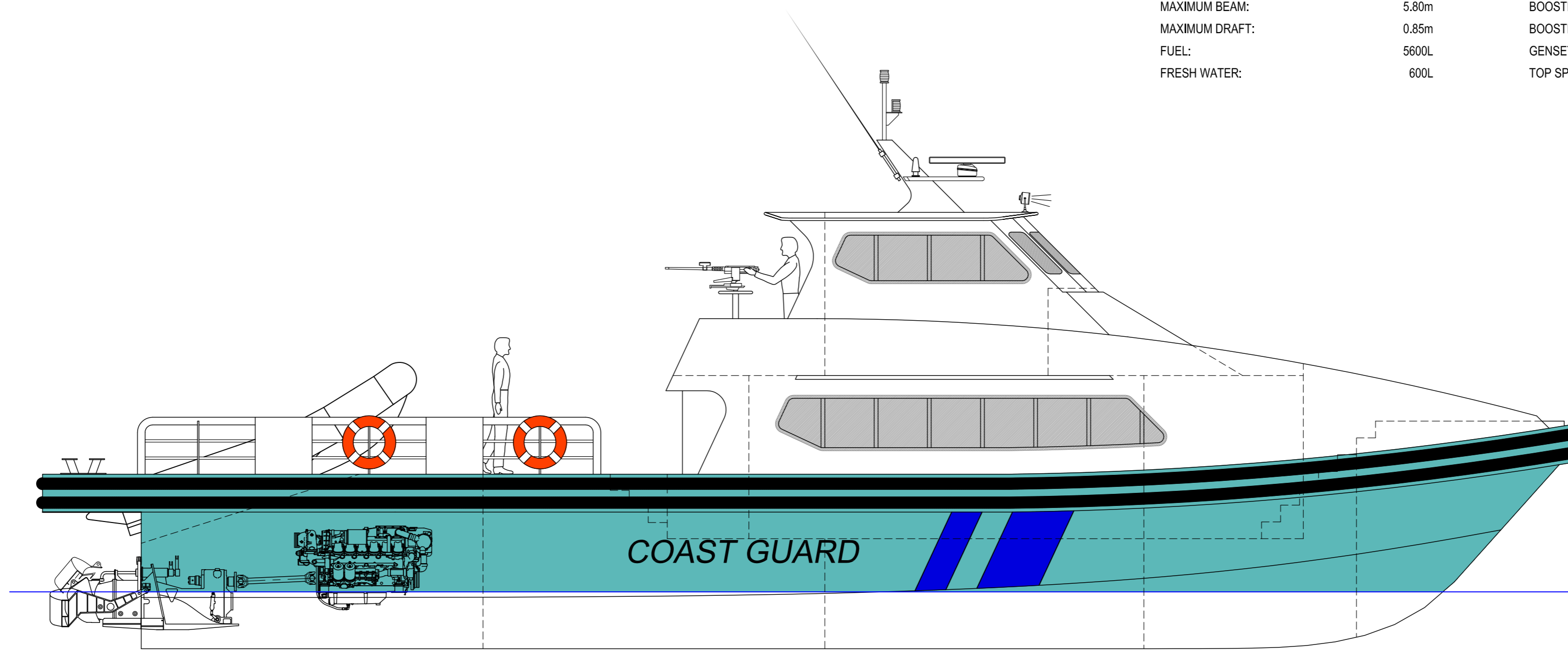


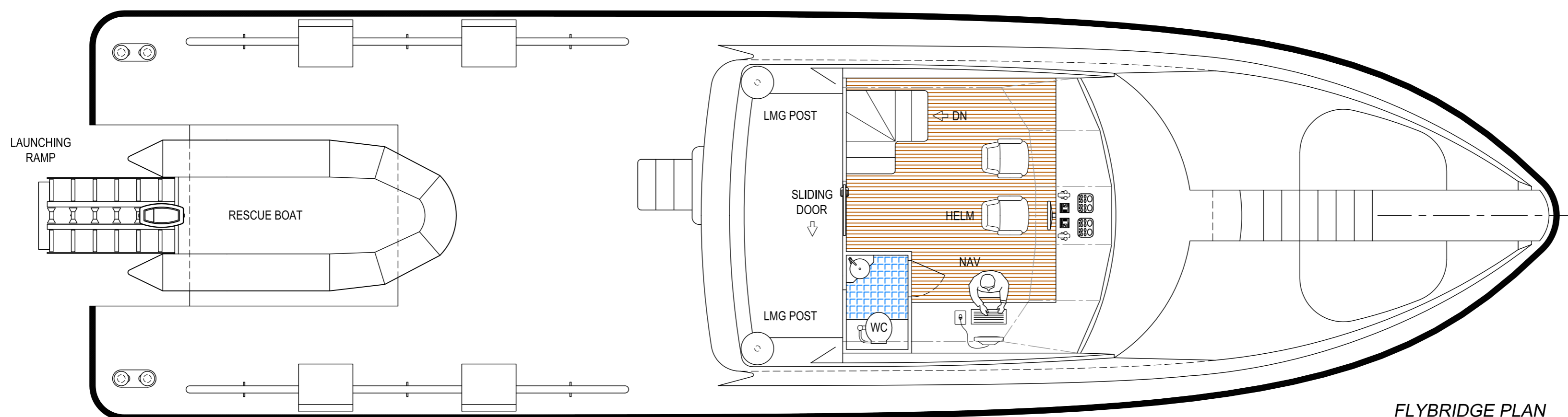
20m PATROL BOAT

VESSEL PARTICULARS:

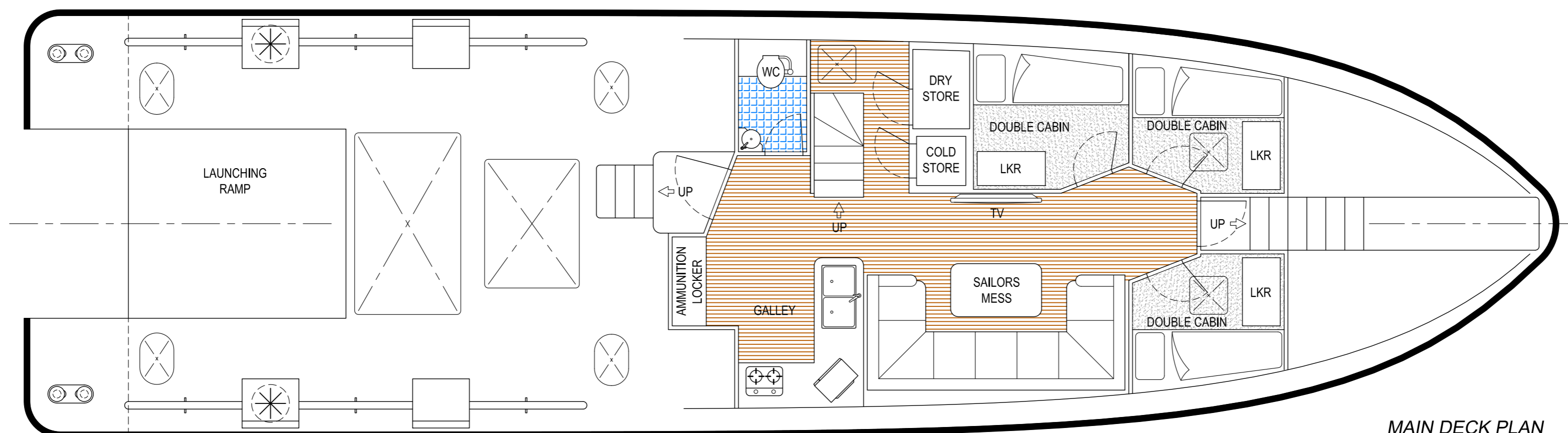
LIGHTSHIP DISPLACEMENT:	28.5 tonne	SULLAGE TANK:	300 L
FULL LOAD DISPLACEMENT:	36.5 tonne	PERSONNEL:	15
LENGTH:	18.8m + overhangs	MAIN ENGINES:	2x MAN D2842 LE410
WATERLINE:	17.15m	MAIN WATERJET:	2x Castoldi TD490
MAXIMUM BEAM:	5.80m	BOOSTER ENGINE:	1x MAN V8-750
MAXIMUM DRAFT:	0.85m	BOOSTER JET:	Castoldi TD400
FUEL:	5600L	GENSETS:	2x 15 kVA
FRESH WATER:	600L	TOP SPEED:	35knots @ full load



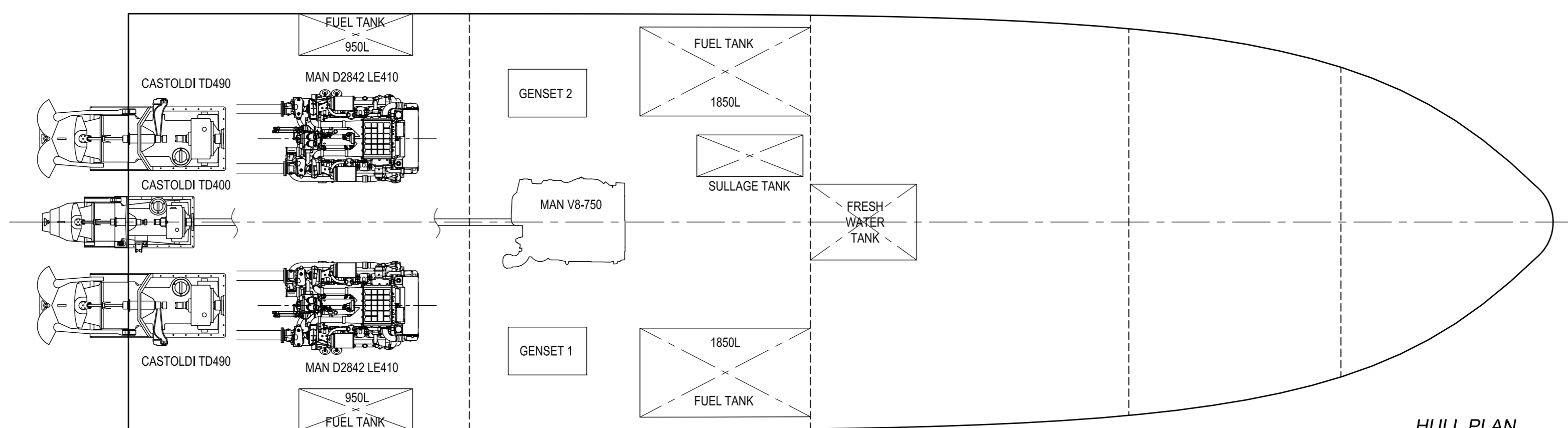
STBD PROFILE



FLYBRIDGE PLAN



MAIN DECK PLAN



HULL PLAN