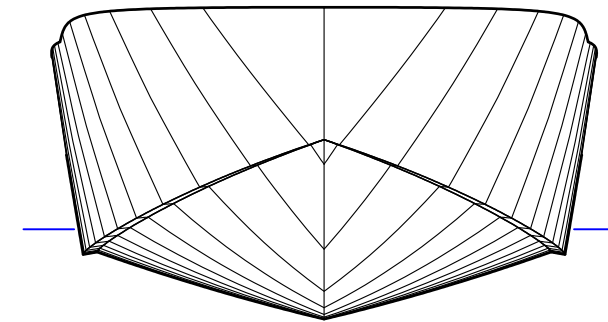
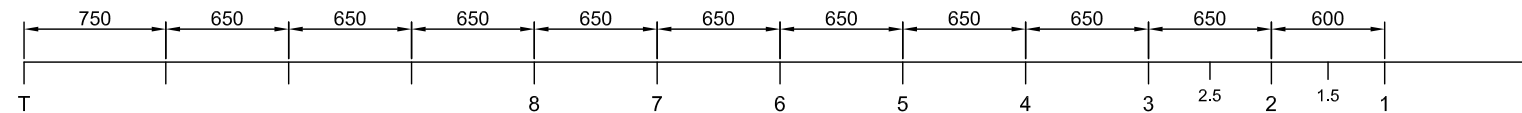
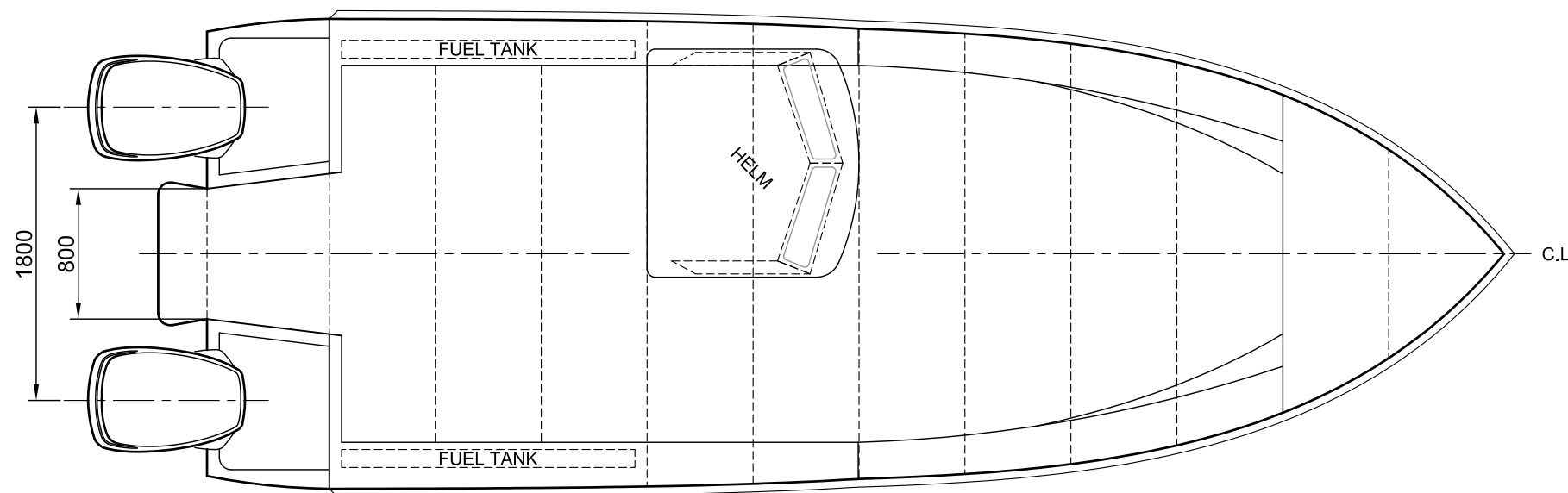


PROFILE



BODY PLAN



PLAN

VESSEL PARTICULARS:

LENGTH OVERALL:	8.8m
HULL LENGTH:	7.95m
WATERLINE LENGTH:	6.8m
BEAM:	2.9m + FENDER
DRAFT:	0.5m
DEADRISE AT TRANSOM:	15°
DEADRISE AT LCG:	20°
LIGHTSHIP DISPLACEMENT:	2.35t
LOADED DISPLACEMENT:	3.50t
ESTIMATED TOP SPEED:	up to 30knots
FUEL TANKS:	2x100L
MAIN ENGINES:	2x 115HP Outboards